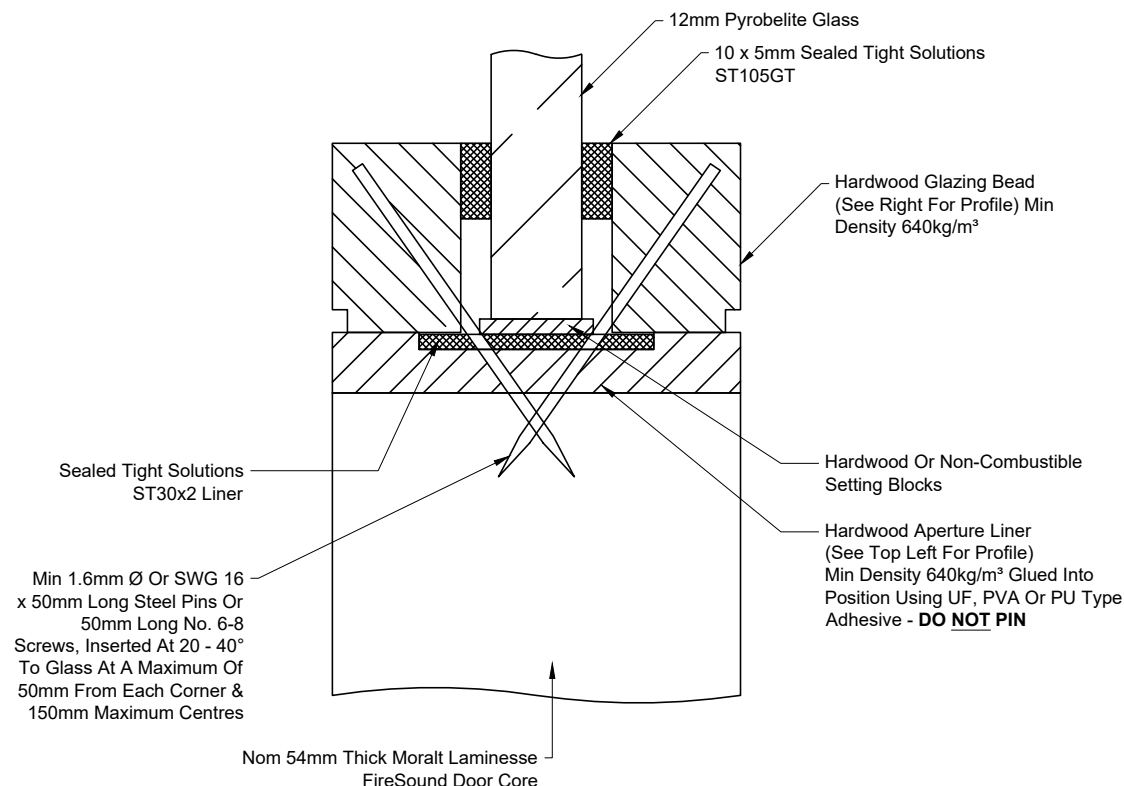
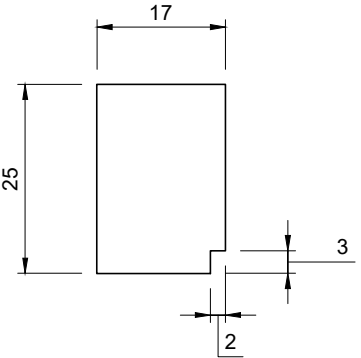


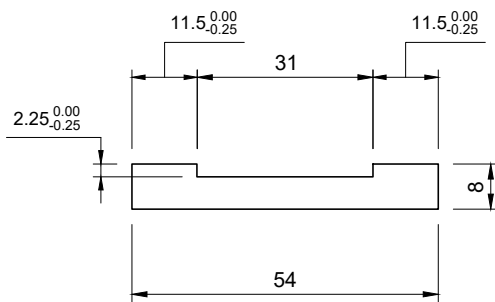
Glazing Must Be To This Drawing - Do NOT Mix
Glazing Systems Even If They Appear The Same



Bead Profile - See DP21321



Hardwood Aperture Liner Profile




DO NOT PIN LINER IN PLACE - Glue in Position Using UF, PVA or PU Adhesives

Quality Standard Of Glazed Aperture To Work Instruction - WI_21
Only Employees With A Signed Training Record For This Glazing System To Use This Glazing System

Approved Glass - See WF409922								
Glass Type	Material Specification For Glass	Beading Drawing	Material Specification For Beading	Maximum Area (m²)	Minimum Margins From Door Edges (mm)	Minimum Core Material Between Apertures (mm)		
Pyrobelite 12	MS_006	DP21321	MS_007	0.92	Top & Bottom Margins: 160mm Side Margins: 210mm	135	Machined Aperture 21mm Larger Than Glass	Lined Aperture 5mm Larger Than Glass

Do Not Scale. If In Doubt Ask!

Description: Glazing System - Moralt Laminasse Firesound 54 - STS 105GT/ST30x2 Seals With Rebated Hardwood Liner - Pyrobelite 12 - Flush Bead - FD60

Drawn By: M.Oxley	Approved: Approved	Date: 14/02/2025	Drawing No: DP21320	 Unit 6, Ranskill Court, Sheffield, S9 5FZ
Size: See Above	Tolerance: +/- 0.5mm	Fire Rating: FD60	REV 02	
Cert No: WF409922 - Valid Until 28/05/2029	© Doorpac Ltd			